

For Sale

Corner Commercial Parcel

212 S. Kingshighway
St. Charles, MO 63301



- Rare Opportunity, High-Visibility Corner Parcel Available
 - 212 S. Kingshighway Street
 - ◆ .15 acre lot
 - ◆ 1,350 SF Office Building
 - ◆ Zoning: (XCAR) Multi-Usage
- Located on the Signalized Corner of S. Kingshighway & 1st Capitol Dr.
- Directly Across from the Entrance to Lindenwood University
- Great for Redevelopment, Retail, Auto Sales
- 26,248 VPD at Signalized Intersection of 1st Capitol and S. Kingshighway
- Sale Price: \$450,000

Danny Wapelhorst

Vice President

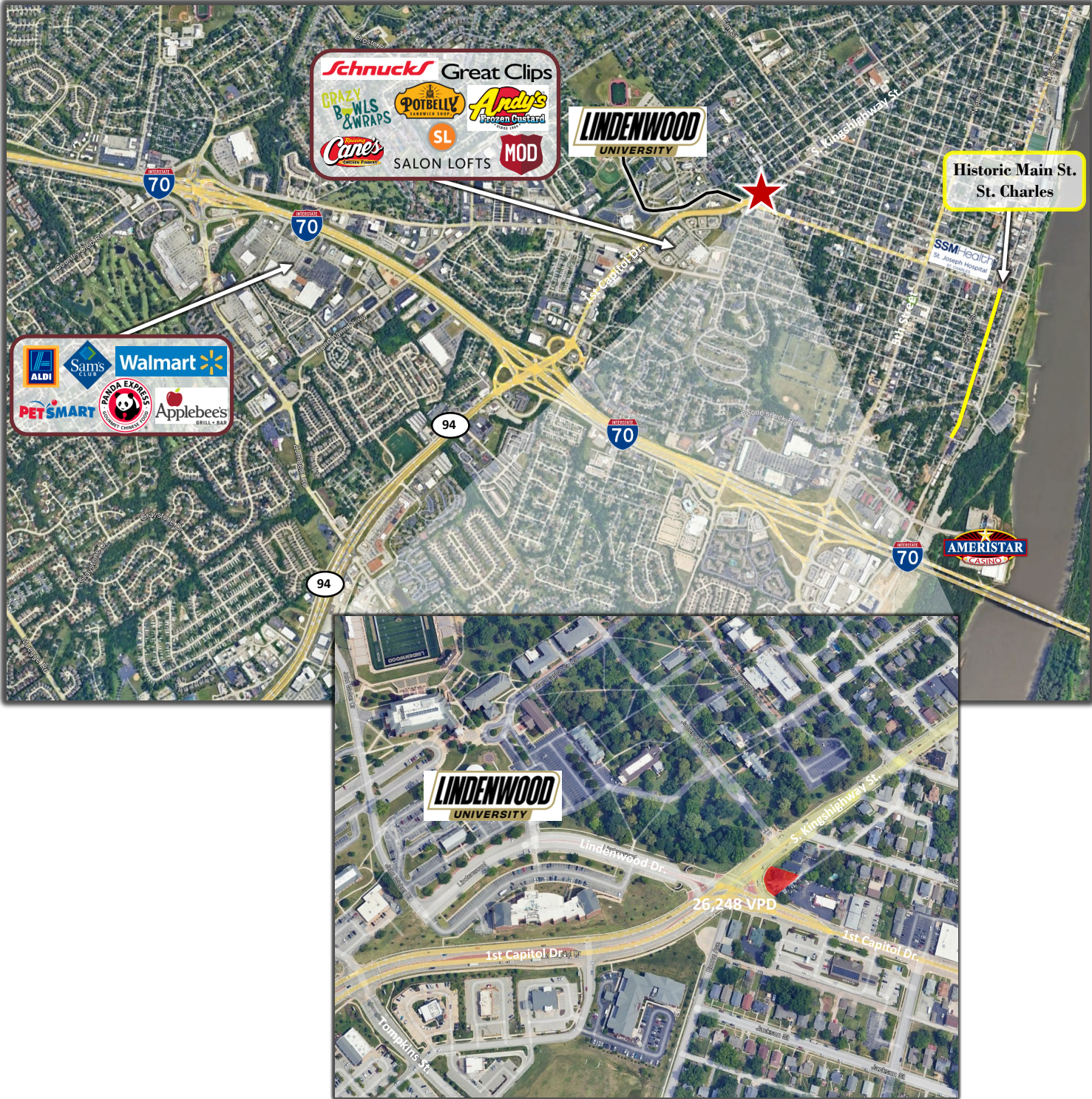
Phone: (636) 970-0330

dannyw@cissellmueller.com



CISSELL MUELLER
COMPANY, L.L.C.

212 S. Kingshighway
St. Charles, MO 63301



Danny Wapelhorst

Vice President
Phone: (636) 970-0330
dannyw@cissellmueller.com



CISSELL MUELLER
COMPANY, L.L.C.