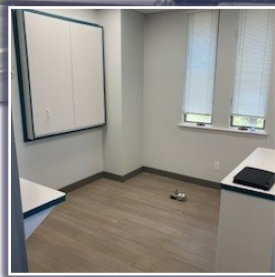


For Lease

Medical Office

303 Jungermann Rd., Ste. D
Saint Peters, MO 63376



- 1,225 SF Available for Lease
- Former Periodontic (Dental) Office
- Reception Area, Waiting Room, Private Restroom, One (1) Private Office, and Four (4) Medical/Exam Rooms
- Space has air and water lines in place in all exam rooms
- Landlord to pay water, sewer, and trash
- Endodontist currently on site
- Lease Rate: \$22.00 PSF, MG

Danny Wapelhorst

Vice President

Phone: (636) 970-0330

dannyw@cissellmueller.com

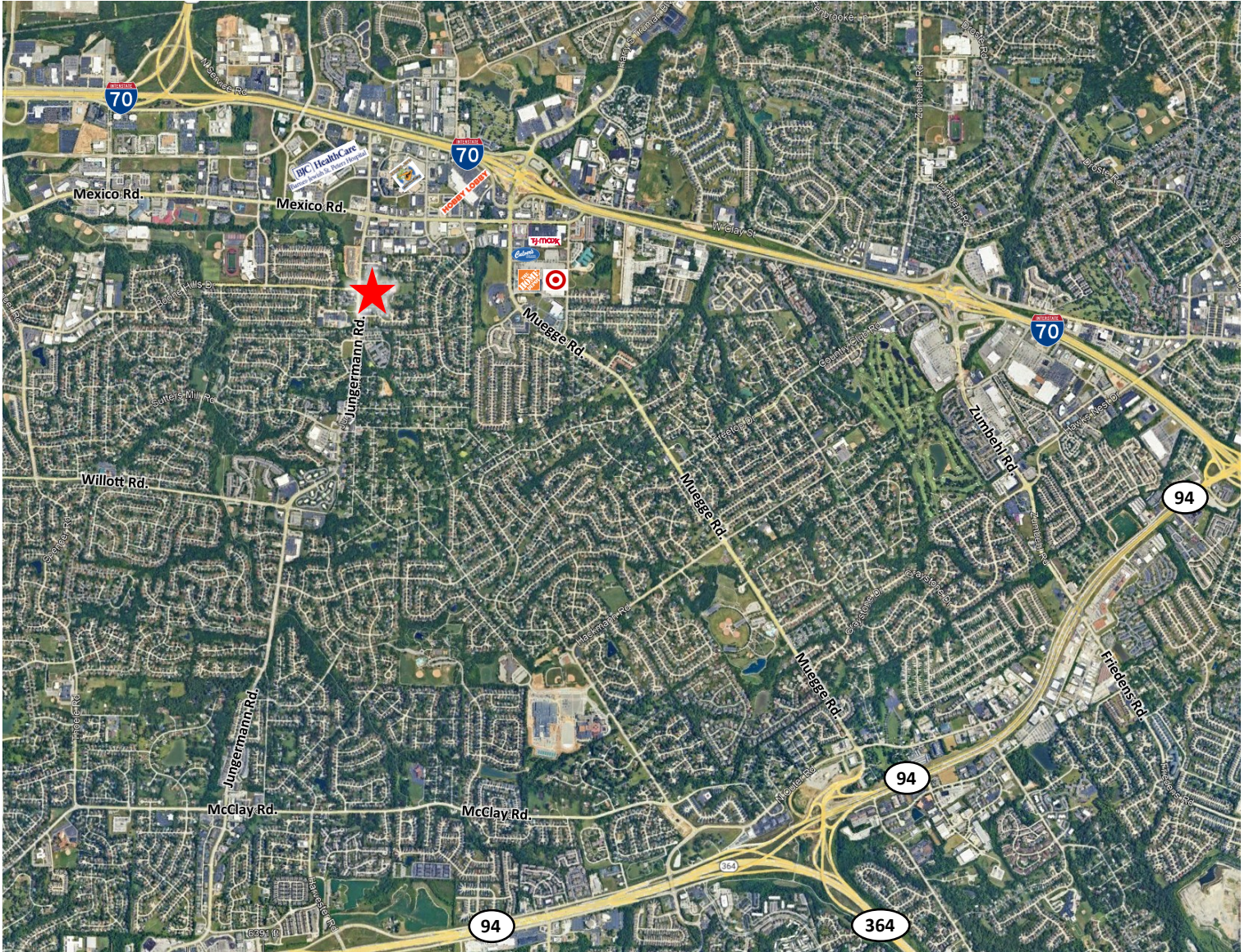


CISSELL MUELLER
COMPANY, L.L.C

For Lease

Medical Office

303 Jungermann Rd., Ste. D
Saint Peters, MO 63376



Danny Wapelhorst

Vice President

Phone: (636) 970-0330

dannyw@cissellmueller.com



CISSELL MUELLER
COMPANY, L.L.C.