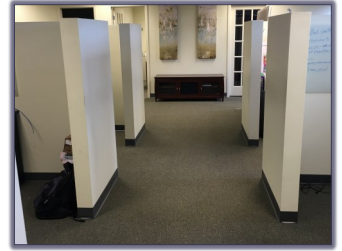


For Sale/Lease

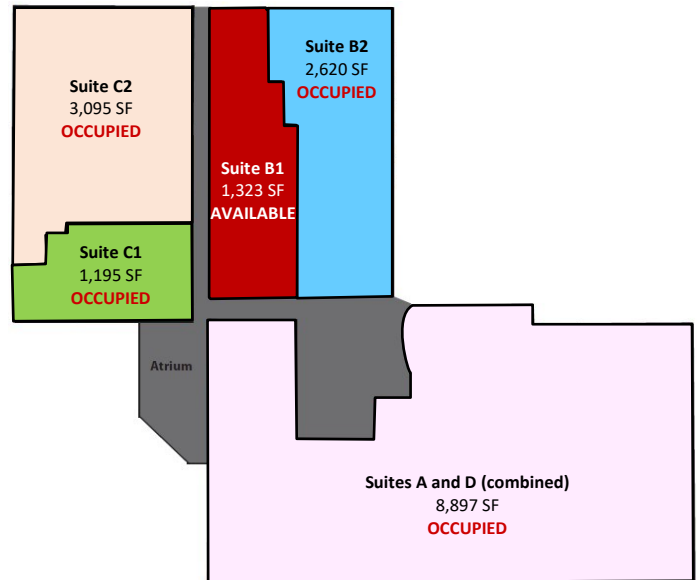
Office Building

3701 N. St. Peters Parkway
St. Peters, MO 63376



- 17,130 SF Building
- Multi-Tenant Building
- 1.77 acre lot
- Monument Signage and Building Signage
- 93 Parking Spaces
- Two Private Dedicated Parking Lots for Tenants
- High-visibility from MO-94
- Curb cuts on Glen Park Dr. & N. St. Peters Pkwy.
- Zoned Improved Commercial (C-3)
- Suite B1; 1,323 SF Available for Lease
- **Lease Rate:** \$17.00 PSF, Full Service
- **Sale Price:** \$1,900,000 (\$110.91 PSF)

Current Floorplan



Danny Wapelhorst

Vice President

Phone: (636) 970-0330

dannyw@cissellmueller.com

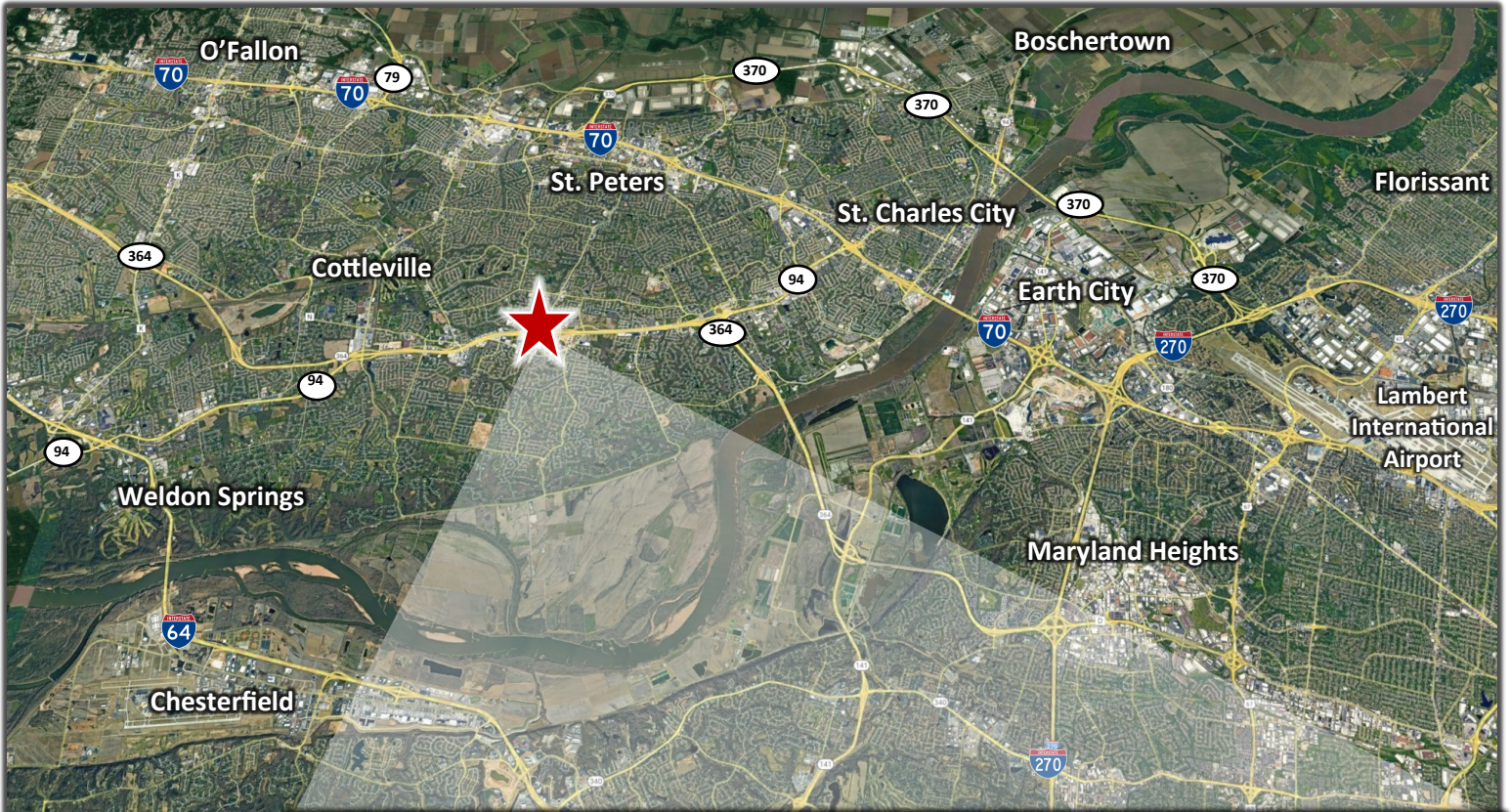


CISSELL MUELLER
COMPANY, L.L.C.

For Sale/Lease

Office Building

3701 N. St. Peters Parkway
St. Peters, MO 63376



Danny Wapelhorst

Vice President

Phone: (636) 970-0330

dannyw@cissellmueller.com



CISSELL MUELLER
COMPANY, L.L.C.