

FOR SALE

- 3.06 Acre Corner Tract
- Owner Will Divide
- Reduced to \$550,000.00

RETAIL

DEVELOPMENT

Feise Road & Hanley Road, Dardenne Prairie, MO 63368



- Less than 1/2 mile from Highway 364 and 1/2 mile from Highway 40
- Access off of Feise or Hanley

- Less than 2 miles from new Dardenne Town Square
- Owner Broker

For more information contact:
Jack Luetkemeyer @ jackluetkemeyer@cissellmueller.com

The information contained herein has been obtained from the owner of the property or from other sources. The brokers do not guarantee the accuracy of this information. Seller and brokers make no representation as to the environmental or other condition of the property and recommend that purchaser investigate fully.



CISSELL MUELLER
COMPANY, LLC

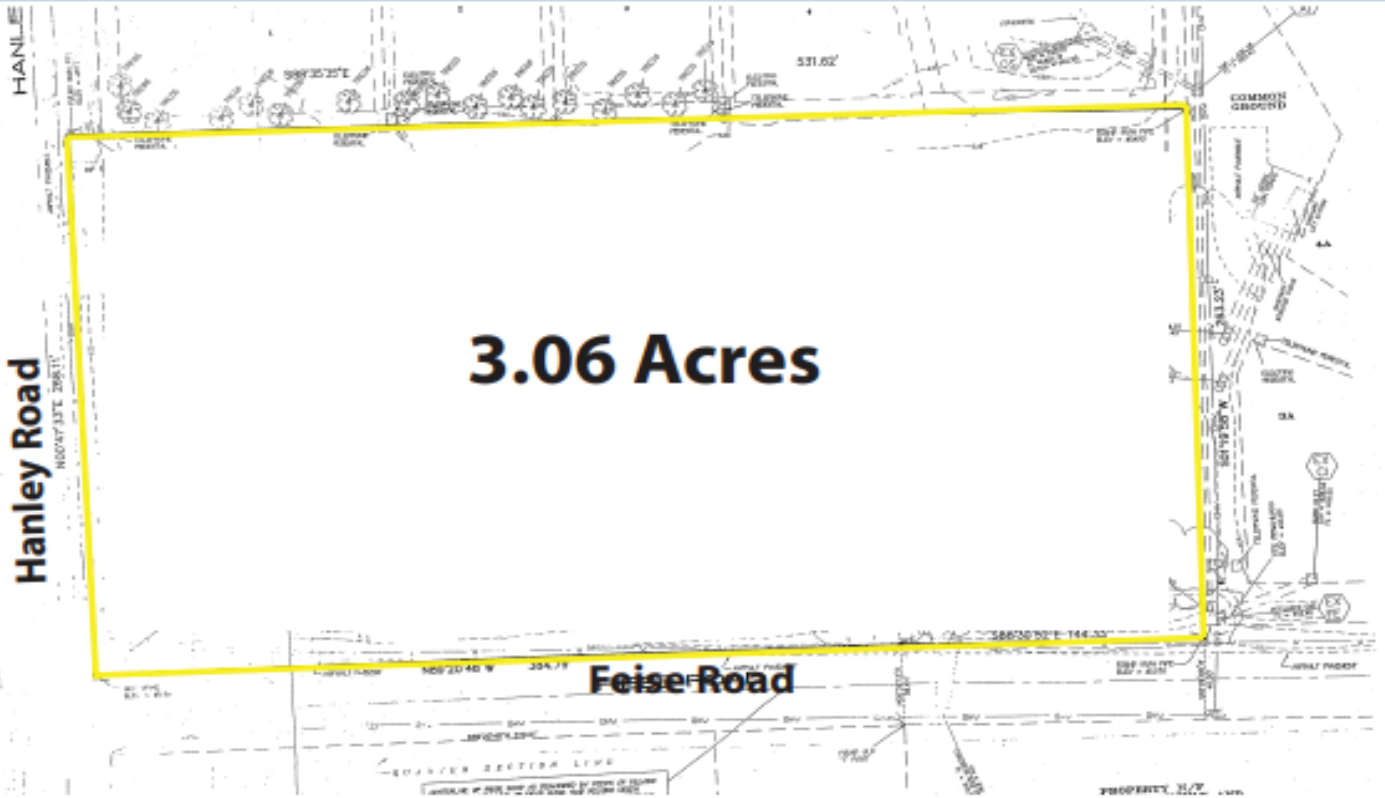
WWW.CISSELLMUELLER.COM | INFO@CISSELLMUELLER.COM
5530 SALT RIVER ROAD, ST PETERS, MO 63376 | (636) 970-0330

COMMERCIAL REAL
ESTATE BROKERAGE

COMMERCIAL DEVELOPMENT

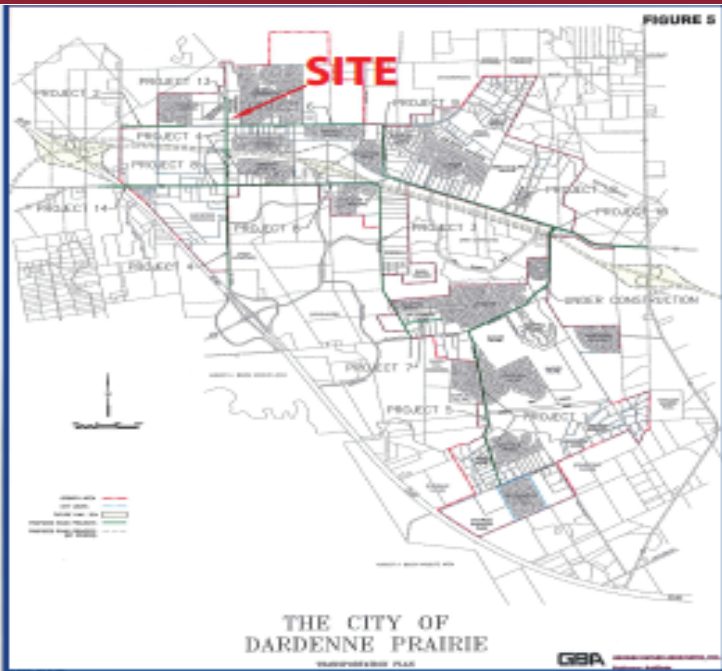
INVESTMENTS

AERIAL



HIGHWAY 364 MAP

DEMOGRAPHICS



	1 Mile	3 Miles	5 Miles
Population:			
2019	7,721	71,337	141,250
2024	8,339	77,464	152,978
Households:			
2019	2,713	25,931	50,344
2024	2,923	28,221	54,629
Median Household Income:			
2019	\$101,903	\$91,254	\$90,935
2024	\$106,952	\$102,834	\$102,044



CISSELL MUELLER
COMPANY, LLC

WWW.CISSELLMUELLER.COM | INFO@CISSELLMUELLER.COM
5530 SALT RIVER ROAD, ST PETERS, MO 63376 | (636) 970-0330

COMMERCIAL REAL
ESTATE BROKERAGE

COMMERCIAL DEVELOPMENT
INVESTMENTS